



# Integrin $\alpha$ 3 Polyclonal Antibody

<b>Catalog No</b>	YP-Ab-17029
<b>Isotype</b>	IgG
<b>Reactivity</b>	Human;Mouse;Rat
<b>Applications</b>	WB;ELISA
<b>Gene Name</b>	ITGA3
<b>Protein Name</b>	Integrin alpha-3
<b>Immunogen</b>	The antiserum was produced against synthesized peptide derived from human Integrin alpha3. AA range:482-531
<b>Specificity</b>	Integrin $\alpha$ 3 Polyclonal Antibody detects endogenous levels of Integrin $\alpha$ 3 protein.
<b>Formulation</b>	Liquid in PBS containing 50% glycerol, 0.5% BSA and 0.02% sodium azide.
<b>Source</b>	Polyclonal, Rabbit,IgG
<b>Purification</b>	The antibody was affinity-purified from rabbit antiserum by affinity-chromatography using epitope-specific immunogen.
<b>Dilution</b>	Western Blot: 1/500 - 1/2000. ELISA: 1/40000. Not yet tested in other applications.
<b>Concentration</b>	1 mg/ml
<b>Purity</b>	$\geq$ 90%
<b>Storage Stability</b>	-20°C/1 year
<b>Synonyms</b>	ITGA3; MSK18; Integrin alpha-3; CD49 antigen-like family member C; FRP-2; Galactoprotein B3; GAPB3; VLA-3 subunit alpha; CD antigen CD49c
<b>Observed Band</b>	150kD
<b>Cell Pathway</b>	Cell membrane ; Single-pass type I membrane protein . Cell membrane ; Lipid-anchor . Cell projection, invadopodium membrane ; Single-pass type I membrane protein . Cell projection, filopodium membrane ; Single-pass type I membrane protein . Enriched preferentially at invadopodia, cell membrane protrusions that correspond to sites of cell invasion, in a collagen-dependent manner. .
<b>Tissue Specificity</b>	Isoform 1 is widely expressed. Isoform 2 is expressed in brain and heart. In brain, both isoforms are exclusively expressed on vascular smooth muscle cells, whereas in heart isoform 1 is strongly expressed on vascular smooth muscle cells, isoform 2 is detected only on endothelial vein cells.
<b>Function</b>	function:Integrin alpha-3/beta-1 is a receptor for fibronectin, laminin, collagen, epiligrin, thrombospondin and CSPG4. Alpha-3/beta-1 may mediate with LGALS3 the stimulation by CSPG4 of endothelial cells migration.,PTM:Isoform alpha-3A, but not isoform alpha-3B, is phosphorylated on serine residues. Phosphorylation increases after phorbol 12-myristate 13-acetate stimulation. Isoform alpha-3A is phosphorylated on Tyr-1051.,similarity:Belongs to the integrin alpha chain family.,similarity:Contains 7 FG-GAP repeats.,subunit:Heterodimer of an alpha and a beta subunit. The alpha subunit is composed of an heavy and a light chain



linked by a disulfide bond. Alpha-3 associates with beta-1. Interacts with HPS5.,tissue specificity:Isoform alpha-3A is widely expressed. Isoform alpha-3B is expressed in brain and heart. In brain, both isoforms are exclusively expressed on vascular smooth muscle cell

### Background

integrin subunit alpha 3(ITGA3) Homo sapiens The gene encodes a member of the integrin alpha chain family of proteins. Integrins are heterodimeric integral membrane proteins composed of an alpha chain and a beta chain that function as cell surface adhesion molecules. The encoded preprotein is proteolytically processed to generate light and heavy chains that comprise the alpha 3 subunit. This subunit joins with a beta 1 subunit to form an integrin that interacts with extracellular matrix proteins including members of the laminin family. Expression of this gene may be correlated with breast cancer metastasis. [provided by RefSeq, Oct 2015],

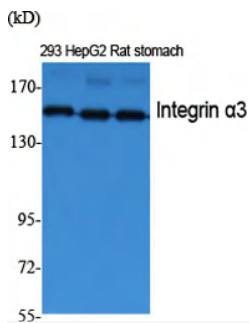
### matters needing attention

Avoid repeated freezing and thawing!

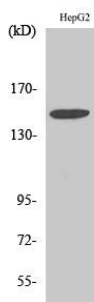
### Usage suggestions

This product can be used in immunological reaction related experiments. For more information, please consult technical personnel.

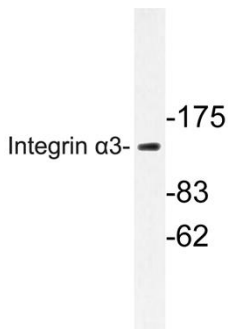
## Products Images



Western Blot analysis of various cells using Integrin  $\alpha$ 3 Polyclonal Antibody diluted at 1:2000



Western Blot analysis of HepG2 cells using Integrin  $\alpha$ 3 Polyclonal Antibody diluted at 1:2000



Western blot analysis of lysate from HepG2 cells, using Integrin  $\alpha$ 3 antibody.